

Technical Note N°1 - Pre 66' SHELBY Cobra 289
Specific technical regulations 2019
V4 – 22-01-2019

	Period F – FIA Form 115	Notes
Minimum weight	1000kg	- Peter Auto mandatory minimum weight - Maximum ballast of 30 kg
Wheels size	6 ½ FR – 7½ RE – Alloy/Magnesium	Maximum 15in
Tyres dimension	- AVON CR6ZZ - FR 215/70R15 or 225/70R15 – RE 245/60R15 - DUNLOP CR 65 - FR 600 L 15 – RE 700 L 15	
Brakes/Calipers	- Alloy Girling Front & Rear - 2 Pistons only.	- Ø pistons Front : 60.5mm - Ø pistons Rear : 44.5mm
Front Disc Brake Diameter	290mm	- Solid Disc– Non ventilated
Rear Disc Brake Diameter	277mm	- Thickness 16mm maximum
Drivetrain	Steel hub Front and Rear	Alloy forbidden
Maximum front/rear tracks	1416mm	
Ground clearance Ride height	100mm	Art. 4.6 Sixties' Endurance regulations.
Maximum capacity / Stroke	4868cc for a stroke of 72,9mm	302 Boss bloc (4 bolts per bearing) forbidden
Timing/ Timing valve	Steel rocker	Tappet roller rockers forbidden
Intake	4 x Weber 48 IDA/IDM	Holley carburetors forbidden
Ignition	- Distributor free - Rev limiter mandatory: MSD 6AL (ref: MSD PN 6425 or 6420) mandatory.	- Spark advance mechanical only, - Maximum 6800 rpm
Cylinder Head	- Period conform cast iron head - Ø 18mm spark plug	- 289 and HP289 heads with C3-, C4, C5 or C6 - Alloy head forbidden - Ø 14mm spark plug forbidden
Engine block material	Cast iron	
Transmission	- 4 speed Syncro T10 Borg Warner « Side Loader » - Half shafts / U-joints	- Helical-toothed gears only, operational synchromesh - Alloy transmission shaft forbidden - « CV Joints » forbidden
Dampers	- Non threaded dampers/abutments - Steel Leaf springs	- Inverted dampers to reduce unsprung weight forbidden - Composite leaf springs forbidden - Must conform to Appendix K prescriptions.
Exhaust manifold	Exhaust pipes must comply with the type shown on the homologation form.	See page 4 – Homologation form 115
Rear axle	4HU-004-12 Salisbury steel Disc self-locking only	- Additional rear axle radiator and pump are accepted - Final drive ratios on FIA form 115 page 5 only allowed.
Rear axle material	Cast iron	Alloy/Magnesium are forbidden
Gearbox material	« Side Loader » Aluminium*	Cast iron or Alloy Top Loader are forbidden
Bodywork	Aluminium	- Le Mans hard top – Fibreglass or Aluminium. - Short hard top – Fibreglass or Aluminium
Windscreen	- Laminated glass only - Highest point – 91,44cm (for a 45° windscreen inclination)	- Lexan forbidden - See page 6 – Homologation form 115 - From center of the floor -> center of the windscreen.
Protections		- Sump guards are forbidden - Underfloors are forbidden

MSD device : #6420 and #6425 only references allowed
(programmable devices forbidden)

Original factory connectors only

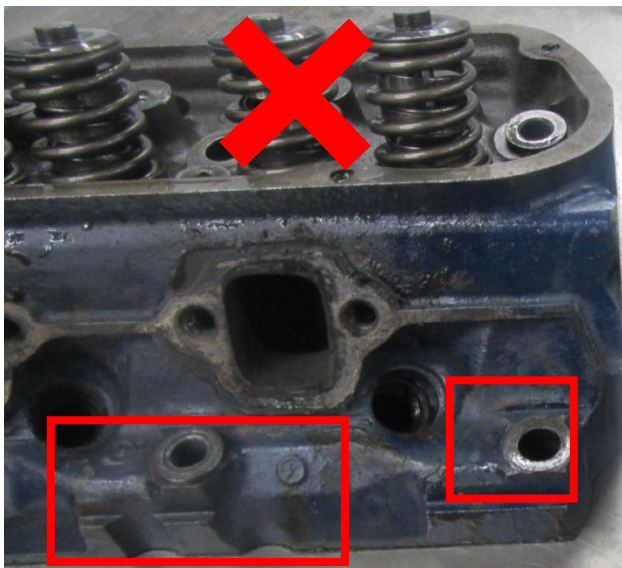


Cylinder head identification

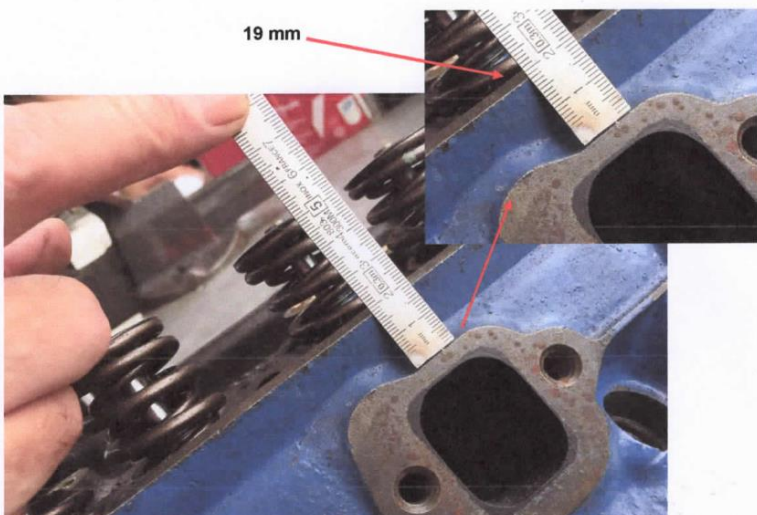
Using remanufactured parts is allowed, provided that they are identical in design and in all of their dimensions to the original components.

Remanufactured to wrong specifications - Forbidden

Conform to period specs – Allowed

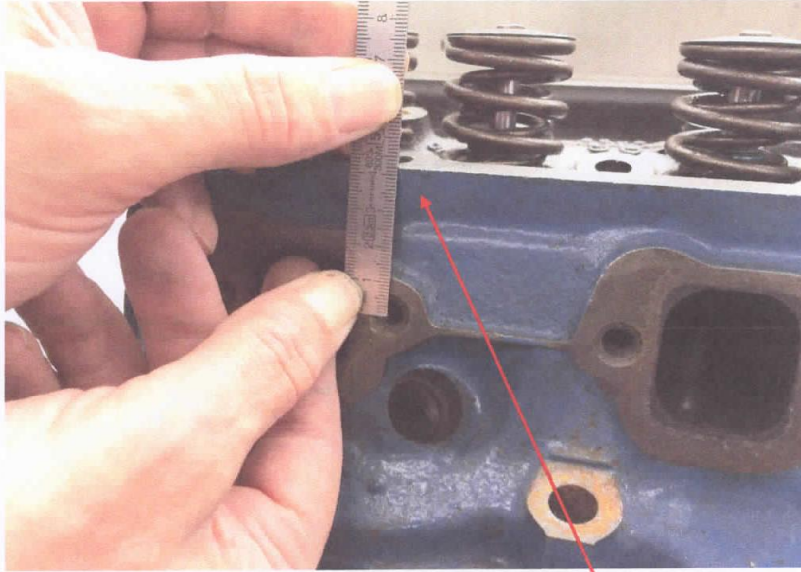


19 mm



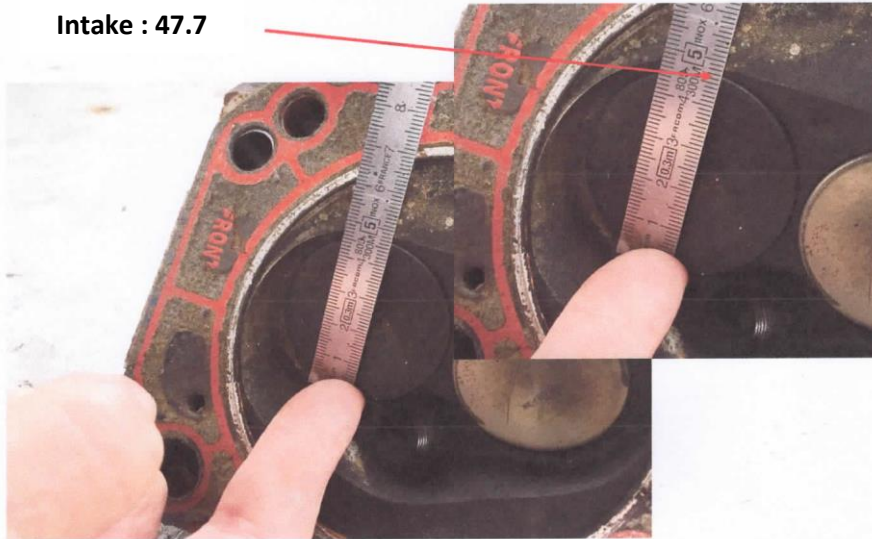
Distance between valves axes
46mm





41 mm

Intake : 47.7



Exhaust : 41,275 or 39.7

